



Wireless Video Presentation System III

Transform your wired projector into a high-end wireless projector.

Includes plug-and-show, 4-to-1 split screen, 1-to-4 screen projection, and PDA wireless projection features.



Customer Support Information

Order toll-free in the U.S.: Call 877-877-BBOX (outside U.S. call 724-746-5500)
FREE technical support 24 hours a day, 7 days a week: Call 724-746-5500 or fax 724-746-0746
Mailing address: Black Box Corporation, 1000 Park Drive, Lawrence, PA 15055-1018
Web site: www.blackbox.com • E-mail: info@blackbox.com

Trademarks Used in this Manual

Trademarks Used in this Manual

Black Box and the Double Diamond logo are registered trademarks of BB Technologies, Inc.

Mac and Macintosh are registered trademarks of Apple Computer, Inc.

Internet Explorer, PowerPoint, Windows, and Windows Vista are registered trademarks of Microsoft Corporation.

Any other trademarks mentioned in this manual are acknowledged to be the property of the trademark owners.

We're here to help! If you have any questions about your application or our products, contact Black Box Tech Support at **724-746-5500** or go to **blackbox.com** and click on "Talk to Black Box." You'll be live with one of our technical experts in less than 30 seconds.

Federal Communications Commission and Industry Canada Radio Frequency Interference Statements

This equipment generates, uses, and can radiate radio-frequency energy, and if not installed and used properly, that is, in strict accordance with the manufacturer's instructions, may cause interference to radio communication. It has been tested and found to comply with the limits for a Class A computing device in accordance with the specifications in Subpart B of Part 15 of FCC rules, which are designed to provide reasonable protection against such interference when the equipment is operated in a commercial environment. Operation of this equipment in a residential area is likely to cause interference, in which case the user at his own expense will be required to take whatever measures may be necessary to correct the interference.

Changes or modifications not expressly approved by the party responsible for compliance could void the user's authority to operate the equipment.

This digital apparatus does not exceed the Class A limits for radio noise emission from digital apparatus set out in the Radio Interference Regulation of Industry Canada.

Le présent appareil numérique n'émet pas de bruits radioélectriques dépassant les limites applicables aux appareils numériques de la classe A prescrites dans le Règlement sur le brouillage radioélectrique publié par Industrie Canada.

Instrucciones de Seguridad (Normas Oficiales Mexicanas Electrical Safety Statement)

1. Todas las instrucciones de seguridad y operación deberán ser leídas antes de que el aparato eléctrico sea operado.
2. Las instrucciones de seguridad y operación deberán ser guardadas para referencia futura.
3. Todas las advertencias en el aparato eléctrico y en sus instrucciones de operación deben ser respetadas.
4. Todas las instrucciones de operación y uso deben ser seguidas.
5. El aparato eléctrico no deberá ser usado cerca del agua—por ejemplo, cerca de la tina de baño, lavabo, sótano mojado o cerca de una alberca, etc.
6. El aparato eléctrico debe ser usado únicamente con carritos o pedestales que sean recomendados por el fabricante.
7. El aparato eléctrico debe ser montado a la pared o al techo sólo como sea recomendado por el fabricante.
8. Servicio—El usuario no debe intentar dar servicio al equipo eléctrico más allá a lo descrito en las instrucciones de operación. Todo otro servicio deberá ser referido a personal de servicio calificado.
9. El aparato eléctrico debe ser situado de tal manera que su posición no interfiera su uso. La colocación del aparato eléctrico sobre una cama, sofá, alfombra o superficie similar puede bloquea la ventilación, no se debe colocar en libreros o gabinetes que impidan el flujo de aire por los orificios de ventilación.
10. El equipo eléctrico debe ser situado fuera del alcance de fuentes de calor como radiadores, registros de calor, estufas u otros aparatos (incluyendo amplificadores) que producen calor.
11. El aparato eléctrico deberá ser conectado a una fuente de poder sólo del tipo descrito en el instructivo de operación, o como se indique en el aparato.
12. Precaución debe ser tomada de tal manera que la tierra física y la polarización del equipo no sea eliminada.
13. Los cables de la fuente de poder deben ser guiados de tal manera que no sean pisados ni pellizcados por objetos colocados sobre o contra ellos, poniendo particular atención a los contactos y receptáculos donde salen del aparato.
14. El equipo eléctrico debe ser limpiado únicamente de acuerdo a las recomendaciones del fabricante.
15. En caso de existir, una antena externa deberá ser localizada lejos de las líneas de energía.
16. El cable de corriente deberá ser desconectado del cuando el equipo no sea usado por un largo periodo de tiempo.
17. Cuidado debe ser tomado de tal manera que objetos líquidos no sean derramados sobre la cubierta u orificios de ventilación.
18. Servicio por personal calificado deberá ser provisto cuando:
 - A: El cable de poder o el contacto ha sido dañado; u
 - B: Objetos han caído o líquido ha sido derramado dentro del aparato; o
 - C: El aparato ha sido expuesto a la lluvia; o
 - D: El aparato parece no operar normalmente o muestra un cambio en su desempeño; o
 - E: El aparato ha sido tirado o su cubierta ha sido dañada.

Table of Contents

Quick Start Guide 7

1. Specifications 11

2. Overview 12

 2.1 Introduction..... 12

 2.2 Features..... 12

 2.3 What’s Included 13

 2.4 Hardware Description..... 14

3. Windows Client Utility 15

 3.1 Starting Program 15

 3.2 Login 16

 3.3 Main User Interface 16

 3.4 Screen Projection..... 17

 3.5 Audio Projection..... 18

 3.6 Video/Music Streaming Feature..... 18

 3.7 Menu Description 20

 3.7.1 Show Login Code 20

 3.7.2 Open Admin Web Page 21

 3.7.3 Searching Server 21

 3.7.4 Projection Quality 22

 3.7.5 Projection Source..... 23

 3.7.6 Serial Audio to Display..... 24

 3.7.7 Auto Wi-Fi Connect 24

 3.7.8 Auto Power Manager 25

 3.7.9 Hide UI 26

 3.7.10 Advanced Screen Capture 26

 3.7.11 Repeat 28

 3.7.12 Make Wireless Video Presentation System Token 28

 3.7.13 Copy Application to Desktop..... 30

 3.7.14 About..... 30

 3.7.15 Exit 31

4. Mac Client Utility 32

 4.1 Launch Application..... 32

 4.2 Main User Interface 33

 4.3 Screen Projection..... 34

 4.4 Video/Music Streaming Feature..... 34

5. Web Management..... 37

 5.1 Home Page..... 37

 5.2 Download Software 37

 5.3 Conference Control 38

 5.4 Login Web Admin 40

 5.4.1 System Status..... 40

 5.4.2 Network Setup..... 42

 5.4.3 OSD Setup..... 44

 5.4.4 Projection Setup 44

 5.4.5 Change Passwords 45

 5.4.6 Reset to Default..... 46

Table of Contents

5.4.7	Firmware Upgrade.....	47
5.4.8	Reboot System	48
5.4.9	Logout	49
6.	Screen Image Background Maker	50

Quick Start Guide

1. Connect the projector's VGA cable to the AC1132A's VGA connector and power up the projector.

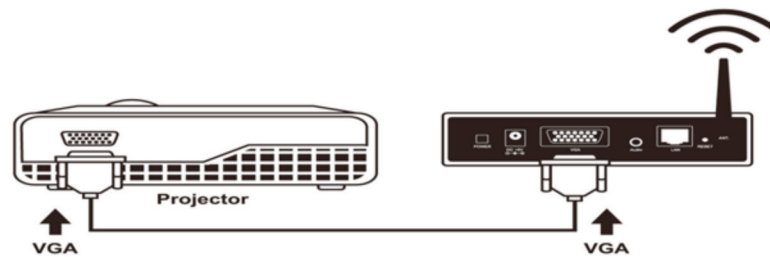


Figure QS-1. Connect the AC1132A to the projector.

2. Power on the AC1132A box.

When the projector shows the default menu on the screen as below, it indicates the AC1132A unit is ready.



Figure QS-2. Default menu.

3. Make sure your PC WLAN is enabled already, and connect your PC with the AC1132A unit.
4. Open your browser and it will redirect to the WPS home page automatically, or you can enter the IP address to access the Wireless Video Presentation System's Web home page.

Quick Start Guide

The default IP address of the AC1132A is 192.168.100.10 or refer to the IP address shown on the left corner of projector screen.

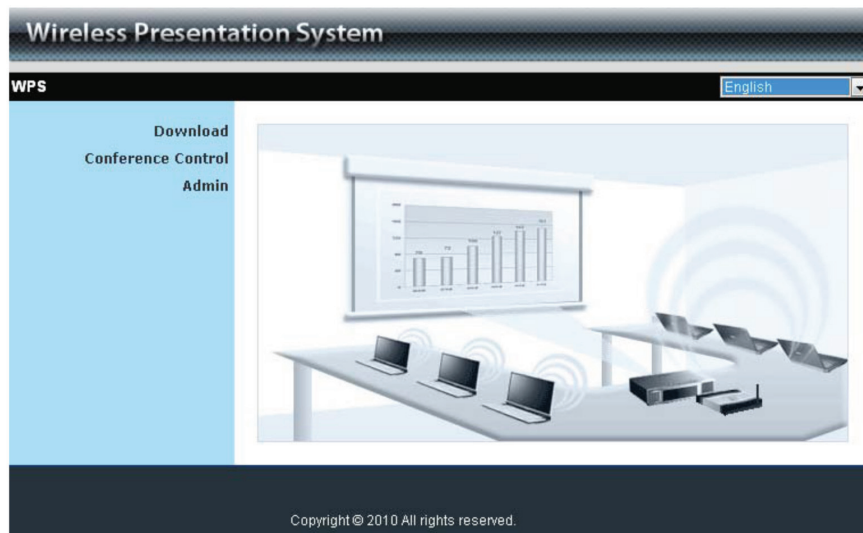


Figure QS-3. Home page.

5. Download the client software (Figure QS-4). Then select the "Win7/Windows Vista/ XP/2000" or "Mac Utility" and execute the installation program (Figure QS-5).

After installing the program, you will see the Wireless Video Presentation System shortcut on the PC screen (Figure QS-5).

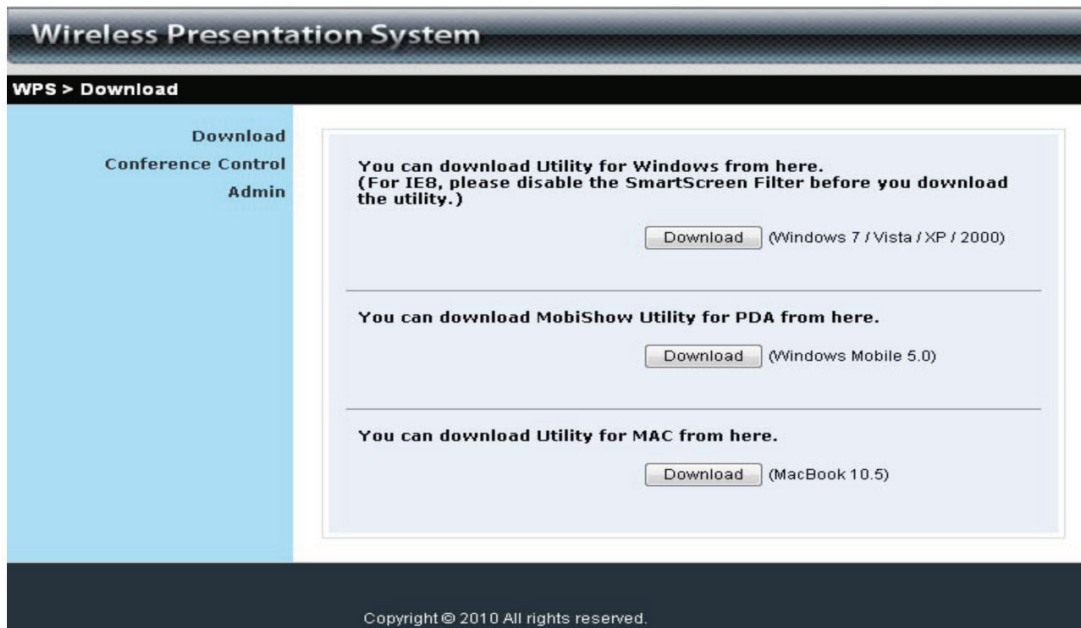


Figure QS-4. Shortcut.



Figure QS-5. Run or Save dialog box and WPS shortcut icon.

6. Make sure your personal firewall allows the AC1132A software to pass through.
7. Select projection devices (Figure QS-6).

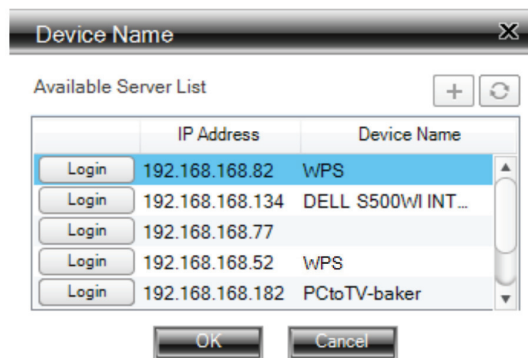


Figure QS-6. Selecting devices.

8. Enter the LOGIN CODE that is found on the projector screen (if required) (Figure QS-7).



Figure QS-7. Login code on projector screen.

9. Click the “Play” button to start projection (Figure QS-8).

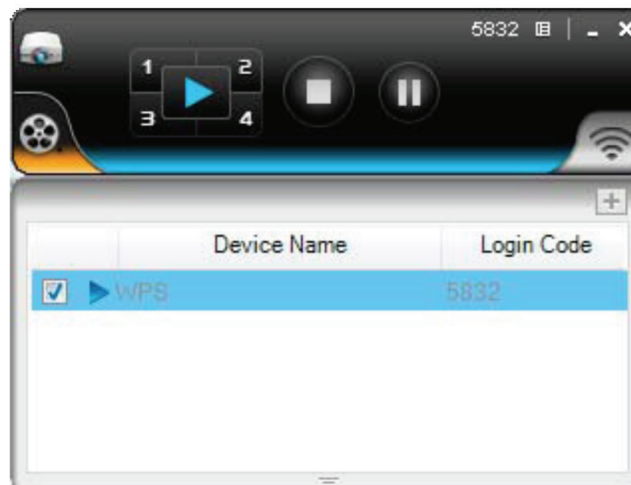


Figure QS-8. Start projection screen.

1. Specifications

Compliance — FCC, UL® E199780

IP Configuration — Automatic or manual (static)

LAN Type — AP mode, hybrid (AP + LAN)

LAN Protocol — TCP/IP

Network Connection — Uses IEEE 802.11b/g/n 2.4 GHz, IEEE 802.3 (10BASE-T), IEEE 802.3u (100BASE-TX)

OS Compatibility — Windows® 2000/XP/7, Windows Vista®, Windows Mobile 5 and later, Mac® OS X 10.5 or later

Screen Resolutions — Output: 800 X 600, 1024 X 768, 1280 X 768 and 1280 x 800;

Input: 800 x 600, 1024 x 768, 1280 x 1024, 1280 x 768, 1440 x 900, 1600 x 1024, 1600 x 1200, 1920 x 1200, 2048 x 1536

Video Formats — MP3, MPEG1 (MPG, DAT), MPEG2 (mpg, vob), MPEG4 (WMV9, asf), DivX3/4/5, Xvid, H.264 (mov)

Video Streaming — Up to 30 fps with Audio

Wireless Antenna (dipole) — (2) antennas (-2dBi)

Wireless Channels — 11

Wireless Encryption — IEEE standard 64/128 bit WEP/WPA/WPA2-PSK

Wireless Frequency — 2.4 GHz

Wireless Range — Up to 328 ft.

Wireless Speed — 11 Mbps, 54 Mbps, 300 Mbps

Connectors — RJ-45 LAN, HD15 VGA, 3.5-mm Audio, (2) SMA

Power — Source: External;

Input Voltage: 100–240 V, 0.5 A, 50/60 Hz;

Secondary Power: 5 VDC, 2.6 A

Size — 4.6"H x 5.5"W x 1.06"D (11.7 x 14 x 2.7 cm)

Weight — 0.62 lb. (0.28 g)

2. Overview

2.1 Introduction

The Wireless Video Presentation System (AC1132A) turns your existing “wired” projector into a “high-end wireless” projector. The unit’s plug-and-show wireless projection features provide efficient and successful presentation.

High-Performance Wireless Projection and Audio Projection

This high-performance wireless projection system with audio enables you to share a multimedia display with several users without using cable.

Plug and Show

With the accompanying plug-and-show USB token, wireless presentation becomes easy. Just link your PC/laptop to the AC1132A (through WLAN or Ethernet), plug the token into a USB port, and in seconds, your screen will project to the connected projector.

4-to-1 Split-Screen Projection

With this 4-to-1 split-screen feature, up to four PC screens can be projected to one projector in the same time. You can easily do side-by-side comparison from four PC/PDAs.

1-to-4 Screen Projection

With 1-to-4 screen projection, you can project PC content out to up to four screens at the same time through AC1132A devices. The 1-to-4 screen projection feature functions both under presentation mode and video mode.

Macintosh® (Mac) Wireless Projection

The Wireless Video Presentation System can connect to a Mac client. The Mac client software is stored in the accompanying USB token. It enables wireless projection from a Mac.

HD Video Streaming

The AC1132A supports video streaming feature, so you can watch HD video on a big screen with original quality through wireless streaming.

SNMP Manager

The AC1132A features SNMP management. Enable Simple Network Management Protocol (SNMP) protocol (Version 2c) to manage and configure one or more devices through a network.

Changeable Splash Screen

You can use the application “Screen Image Background Maker” to change the Splash Screen. Design the image with the message you would like to present, upload it through a Web control page, and you will have a customized starting page.

AP-Client Mode

You can enable the AP-Client Mode function to let the AC1132A join the existing access point through Wi-Fi. This feature provides the flexibility of wireless network deployment in enterprise environment.

Remote Desktop

Plug a standard USB keyboard or mouse into the USB port on the front panel of the AC1132A device to control your PC remotely.

2.2 Features

- Supports Windows 7, Windows Vista, XP, 2000, and Mobile 5/6.
- Supports Macintosh® (Mac®) version 10.5 and above.
- Plug and Show. No installation required. Just plug the included token into a USB port, and start wireless projection in seconds.
- Features 4-to-1 split screen projection. One projector functions as four projectors.

- Enables 1-to-4 screen projection. Project PC content to four screens for multicasting.
- Supports smartphone wireless projection.
- Provides session security login, wireless WEP/WPA key and gatekeeper function to protect presentation contents and keep them secure.
- Supports music and video streaming via video playback.
- Includes audio.
- Supports H.264 HD video streaming.
- You can change the splash screen image.
- SNMP Manager enables you to manage the devices easily.
- AP-ClientMode enables you to easily deploy wireless in a network enterprise.
- Features remote desktop.

2.3 What's Included

Your package should include the following items. If anything is missing or damaged, contact Black Box Technical Support at 724-746-5500 or info@blackbox.com.

- (1) Wireless Video Presentation System III unit
- (1) 5-VDC, 2.5-A wallmount power supply with U.S. adapter, UK adapter, EU adapter, and Australia adapter
- (2) antennas
- (1) mounting bracket for a wall
- (2) small mounting screws to mount the AC1132A to a bracket
- (4) large screws to mount the bracket to the wall
- (1) quick installation guide
- (1) USB flash drive/token containing software and this user's manual

USB Token Contents

The USB token consists of the following software:

Client Folder:

- Software for Windows® and Mac® OS, MobiShow software for Windows Mobile 5/6

Applications Folder:

- VAC (for audio projection)
- VDD (for virtual extended screen)
- IB Maker (for changing startup screen)
- PtG Converter (for MobiShow PtG function)
- SNMP Manager (for Wireless Presentation System device management)

2.4 Hardware Description

Figures 2-1 and 2-2 show the front panel of the AC1132A. Table 2-1 describes its components.



Figure 2-1. Front panel.

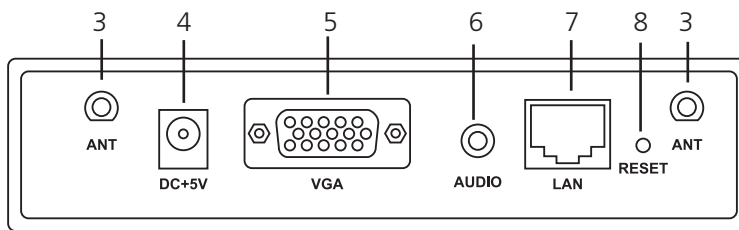


Figure 2-2. Back panel.

Table 2-1. Wireless Presentation System III components.

Number	Component	Description
1	USB connector	Connects to mouse and/or keyboard
2	Power LED	Lights when power to the unit is on
3	Antenna port	Connects to antenna
4	5-VDC power connector	Links to power
5	VGA connector	Connects to projector input
6	Audio connector	Attaches to audio
7	RJ-45 port	Links to LAN
8	Reset button	Press to reset the unit

3. Windows Client Utility

3.1 Starting Program

After you download the Wireless Video Presentation System Windows program via the Web page successfully, follow the steps below.

1. Click on the Wireless Video Presentation System icon to execute the program (Figure 3-1).



Figure 3-1. Wireless Video Presentation System icon.

2. The program starts to search for AC1132A box automatically.
3. When it finds the Wireless Video Presentation System box, a “Login Code” dialog box pops up on the PC screen (Figure 3-3).

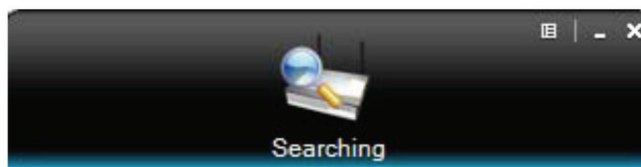


Figure 3-2. Searching for Wireless Video Presentation System box.

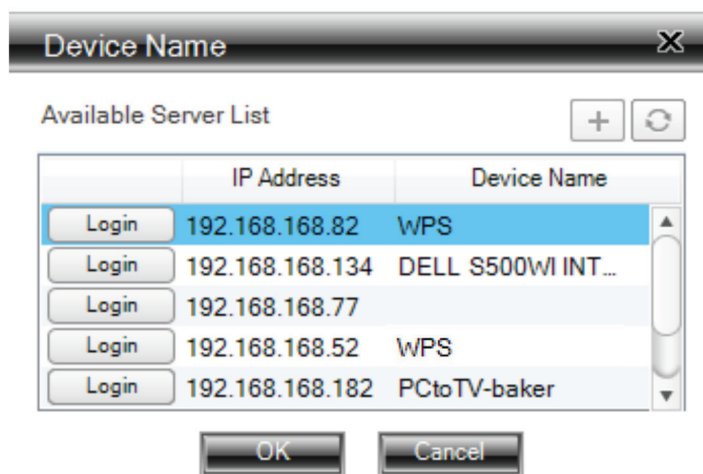


Figure 3-3. Enter login code screen.

3.2 Login

When the “Login Code” dialog box appears, enter the login code to start your presentation (Figure 3-4). The login code appears on the projector screen.

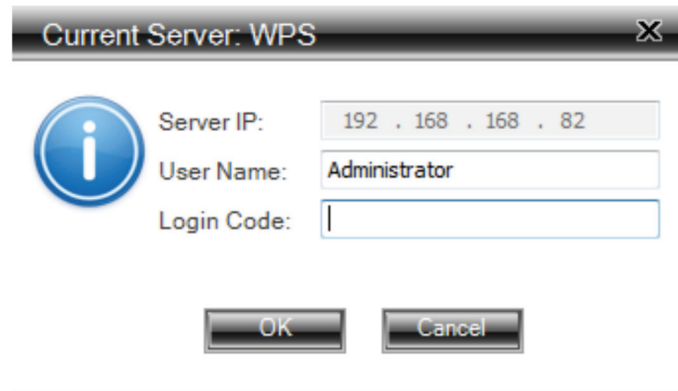


Figure 3-4. Login screen.

3.3 Main User Interface

Figures 3-5 and 3-6 show the main user interface.

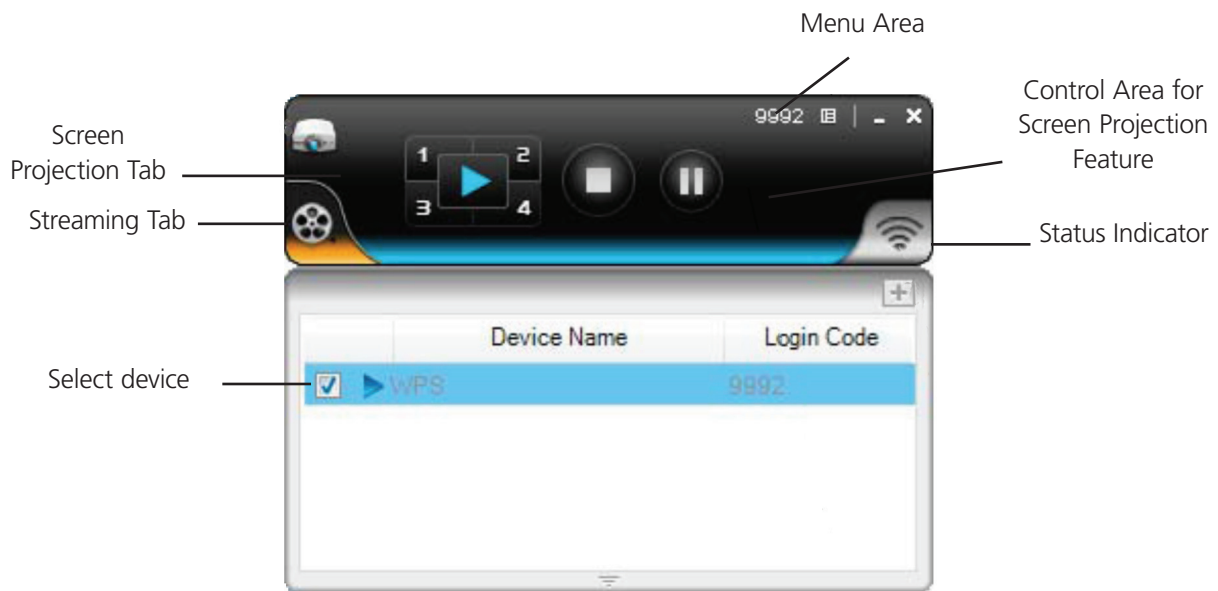


Figure 3-5. Start projection.

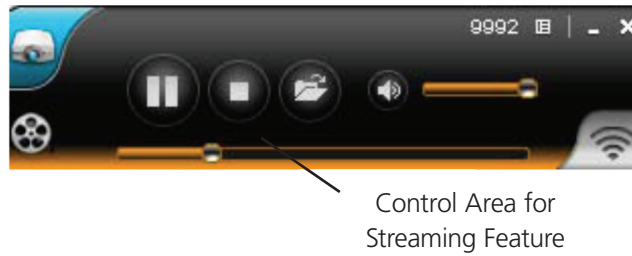


Figure 3-6. Control area for streaming feature.

3.4 Screen Projection

Click on the "Play" button for full or split screen to project the main screen on to the display immediately (Figure 3-7). Click on the "Pause" button to freeze the projection screen. Click on the "Stop" button to stop projecting your screen.








NOTE: To enable audio projection, you must install the provided audio driver and set the projection quality to "Normal."



Figure 3-7. Buttons on the unit.

NOTE: The buttons are located on the main control panel. Only the color is different.

Table 3-1. Buttons and descriptions.

Button	Description
	Full screen projection
	Project to Split #1
	Project to Split #2
	Project to Split #3
	Project to Split #4
	Stop projecting
	Pause projecting

3.5 Audio Projection

First, before starting audio projection, install the "VAC.exe" (Virtual Audio Control) if your computer uses Windows XP. The software is in the USB token. (If you're running Windows Vista or Windows 7, you won't need to install VAC.)

Second, audio projection works only when the "Normal" option is selected for "Projection Quality."

After you complete these two steps, you should hear the audio projecting from the device.

3.6 Video/Music Streaming Feature

Click the "Video Tab" to switch to Video Mode, choose a video/audio file, then it will stream the original file to playback on the screen.

NOTE: The Video Tab is the video reel on the bottom left of the image in Figure 3-8.



Figure 3-8. Video Mode tab layout.

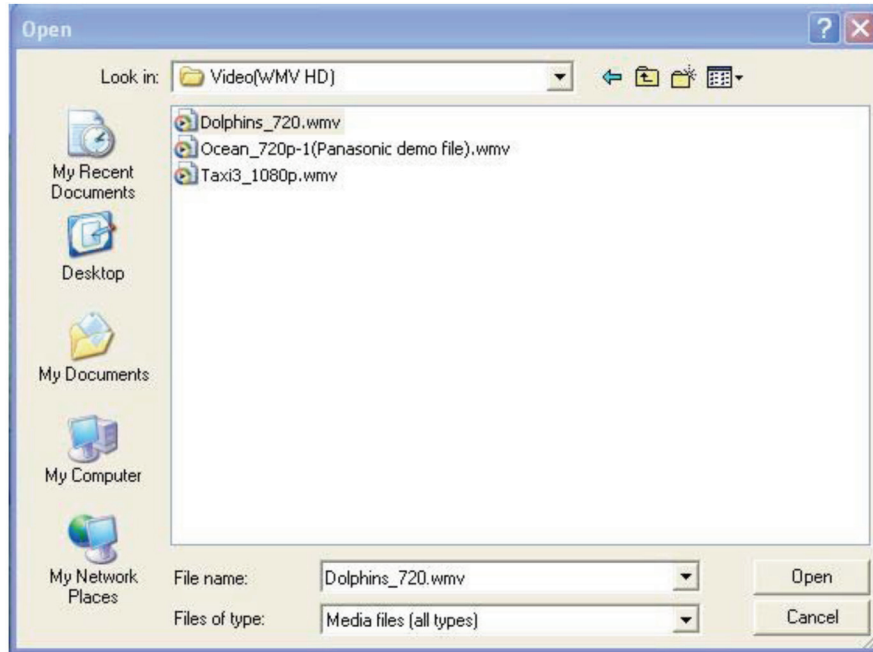




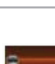



Figure 3-9. Selecting a video file for Video Mode.

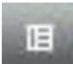
* Supported video/audio format: MPEG1/2, DivX(3.4.5), XviD(MPEG4), H.264, WMV9, MP3, WMA.

3.7 Menu Description

Table 3-2. Buttons and descriptions.

Button	Description
	Start playing video/music
	Stop playing video/music
	Open video/music file
	Mute
	Volume Level
	Progress bar

3.7.1 Show Login Code

Click  to open the function menu and select "Show Login Code." It will display the login code on the upper-left of the desktop and close it automatically after 10 seconds. You can also click on the area to close this window manually.

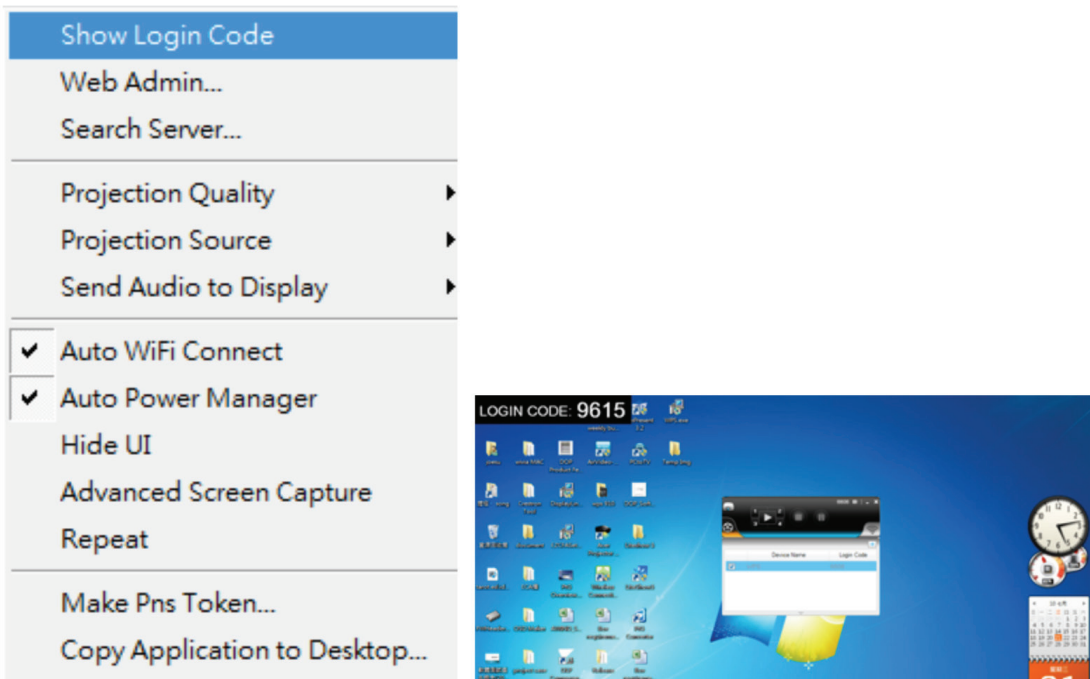


Figure 3-10. Function menu, Show Login Code selected.

3.7.2 Open Admin Web Page

Click  to open the function menu and select the “Web Admin” management web page. The Web page has detailed functions that will be described in the next chapter.

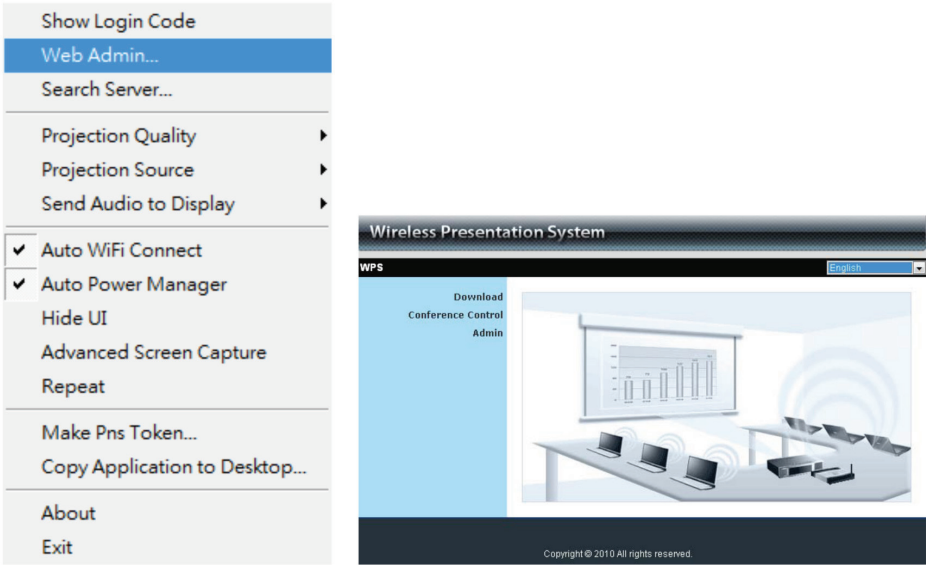


Figure 3-11. Web Admin option selected.

3.7.3 Searching Server

Click “Search Server” to refresh the Wireless Video Presentation System list in case more users have been added to the network.

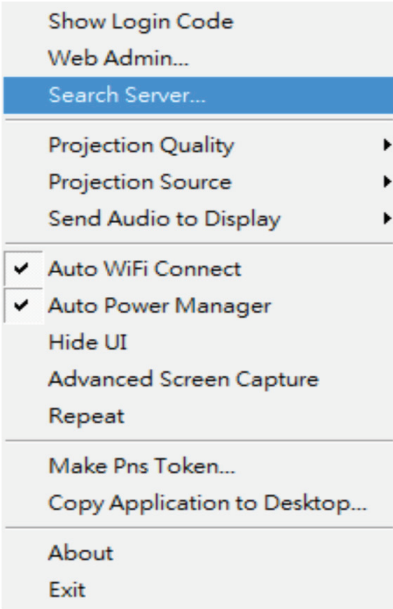


Figure 3-12. Search Server menu option.

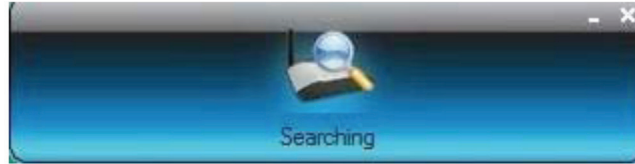


Figure 3-13. Searching icon.

3.7.4 Projection Quality

Click on "Projection Quality" (Figure 3-14). Choose "Normal" for faster projection speed with lower screen image quality, and "Best" for clear screen image quality but slower projection speed.

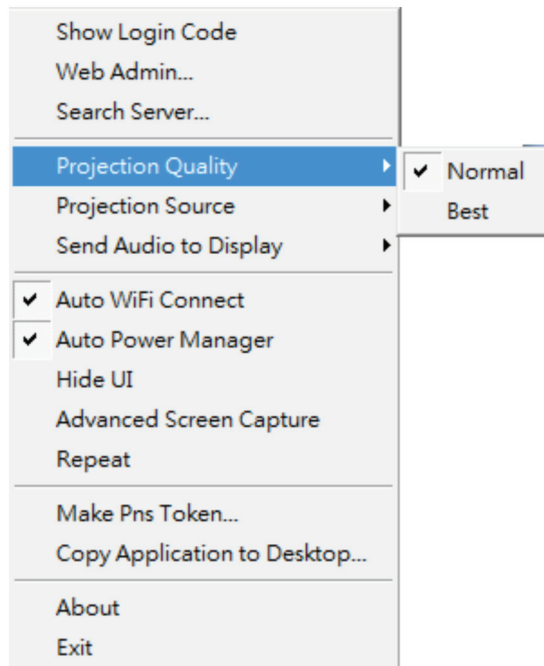


Figure 3-14. Projection Quality menu option.

3.7.5 Projection Source

Click on "Projection Source" (Figure 3-15) then select to project the main screen on the desktop or the virtual extended screen.

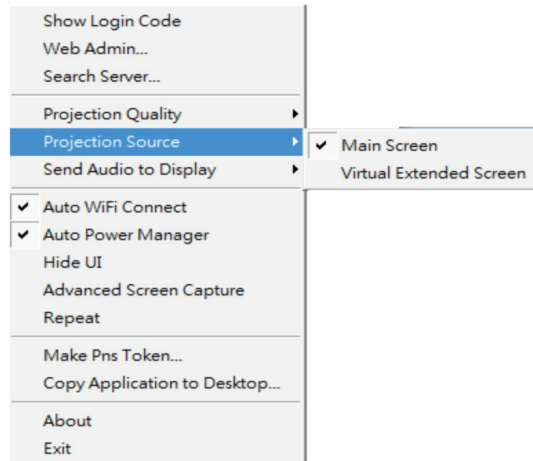


Figure 3-15. Projection Source, main screen menu option.



Figure 3-16. Projecting to main screen.

Virtual Extended Screen option

First, you need to install the "VDD.exe" driver, which is stored in the USB token.

3.7.6 Send Audio to Display

Click "Send Audio to Display" (Figure 3-17), then select the function you want to start audio projection or not.

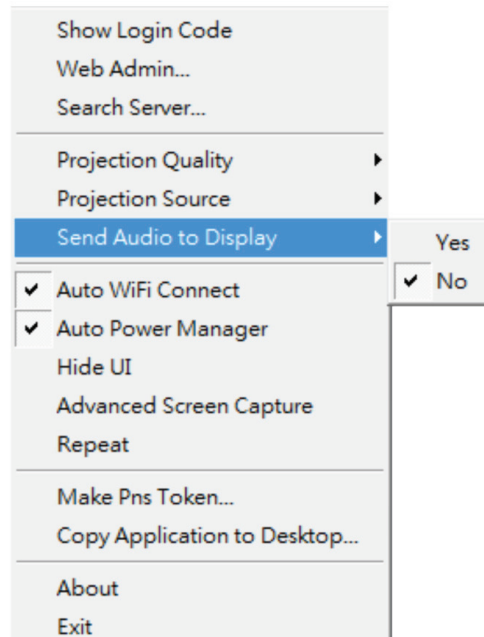


Figure 3-17. Send Audio to Display menu option.

3.7.7 Auto Wi-Fi Connect

Click "Auto WiFi Connect" to enable the auto function (Figure 3-18). This function can save steps when connecting Wi-Fi.

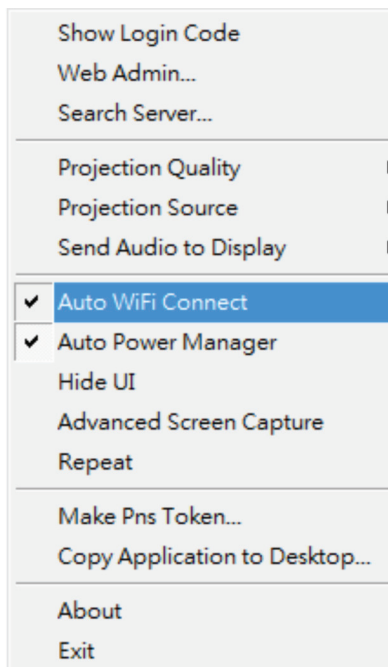


Figure 3-18. Auto Wi-Fi Connect menu option.

3.7.8 Auto Power Manager

For the highest projection performance, the Auto Power Manager (Figure 3-19) application will turn the PC's windows power scheme from the current settings to "highest performance" automatically; however, you can click the "Auto Power Manager" to enable or disable this function and restore your power scheme immediately.

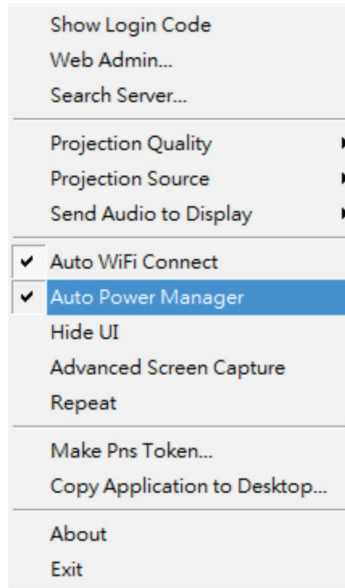


Figure 3-19. Auto Power Manager menu option.

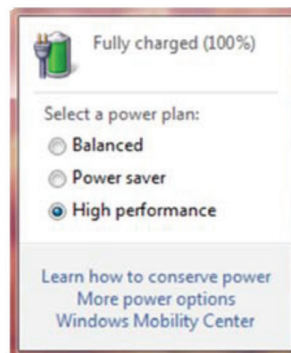


Figure 3-20. High performance selected.

3.7.9 Hide UI

Click on “Hide UI” (Figure 3-21) to choose to hide or display the application control panel from the projection screen.

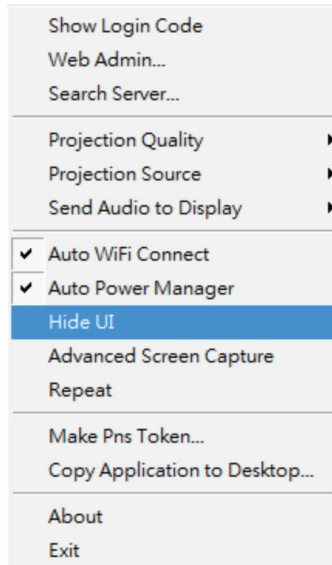


Figure 3-21. Hide UI option.



Figure 3-22. Before and after hide user interface display.

3.7.10 Advanced Screen Capture

Click on “Advanced Screen Capture” (Figure 3-23), and you will be able to see tip windows and other layered windows (including the main UI) on the connected display. However, the mouse cursor may blink from time to time when you are projecting your PC screen.

- Disable "Advanced Screen Capture."

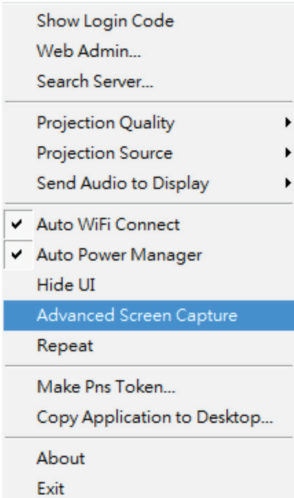


Figure 3-23. Advanced Screen Capture option.

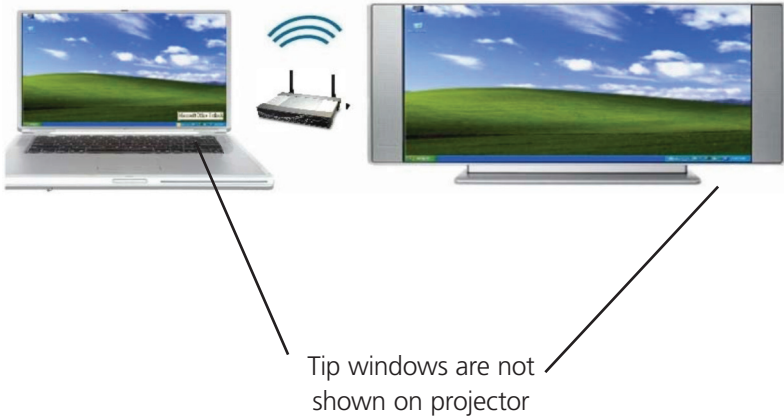


Figure 3-24. Advanced Screen Capture disabled.

- Enable "Advanced Screen Capture."

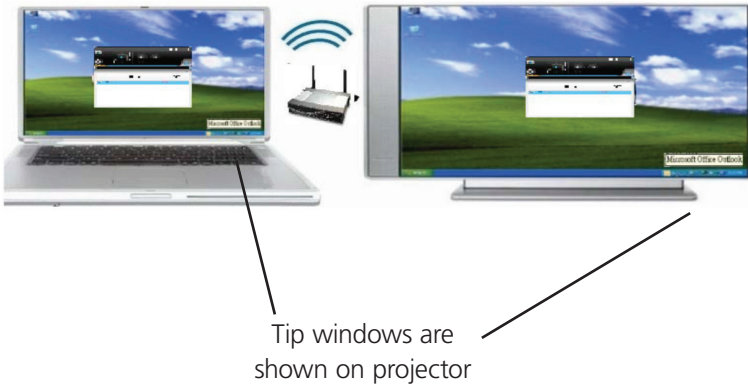


Figure 3-25. Advanced Screen Capture enabled.

3.7.11 Repeat

Click on "Repeat" (Figure 3-26) and you can choose to play back the current video/audio file.

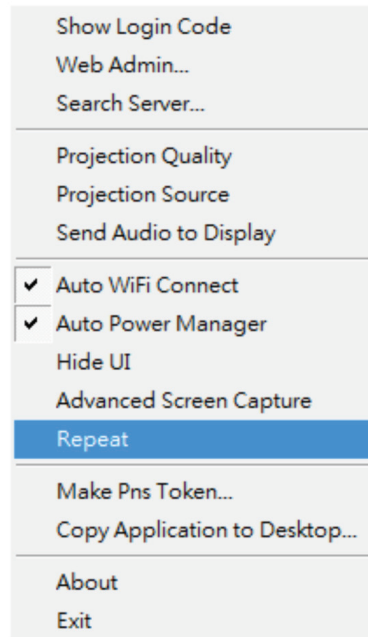


Figure 3-26. Repeat option.

3.7.12 Make Wireless Video Presentation Token

Click "Make PnS Token" (Figure 3-27) to make a USB Plug and Show token, then insert a USB thumb drive and follow the wizard (Figures 3-28 and 3-29) to make the token.

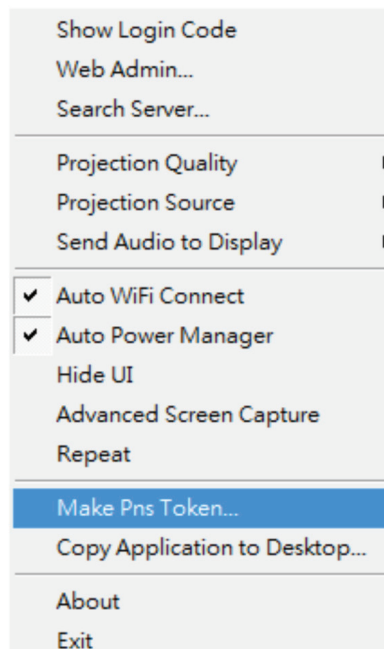


Figure 3-27. Make PnS token.



Figure 3-28. Welcome to Token Wizard screen.

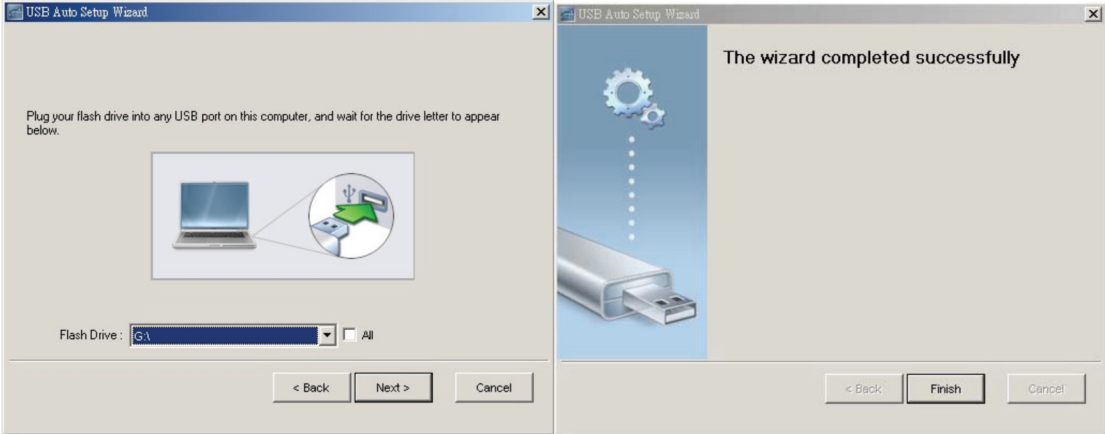


Figure 3-29. Wizard Completed Successfully screen.

3.7.13 Copy Application to Desktop

Click the “Copy Application to Desktop” (Figure 3-30), and it will copy the application to your desktop immediately even if you don’t have system privileges.

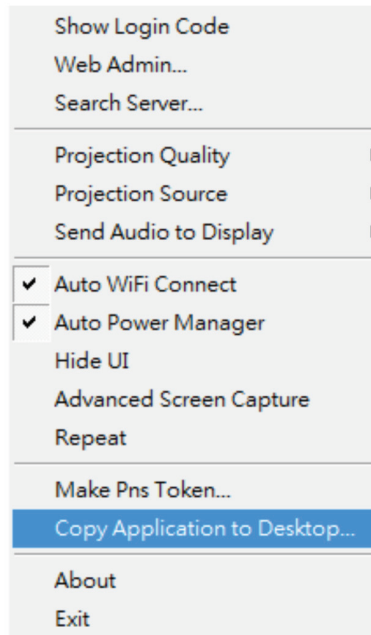


Figure 3-30. Copy application to desktop.

3.7.14 About

Click “About” to show system information (Figures 3-31 and 3-32). It includes product model name, client version, IP address, and other information.

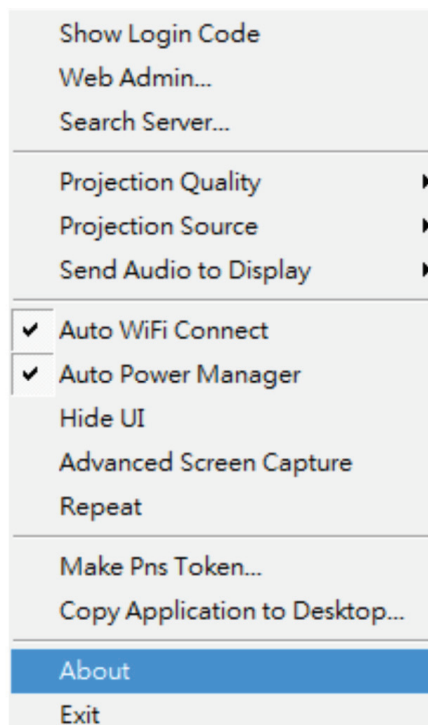


Figure 3-31. About option.

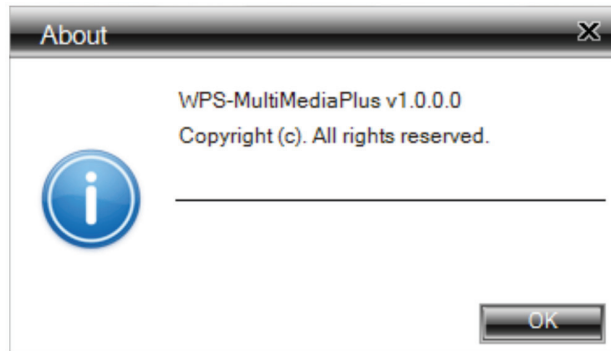


Figure 3-32. Copyright page.

3.7.15 Exit

Click "Exit" to exit this application (Figure 3-33). It will stop the current presentation and close the application immediately.

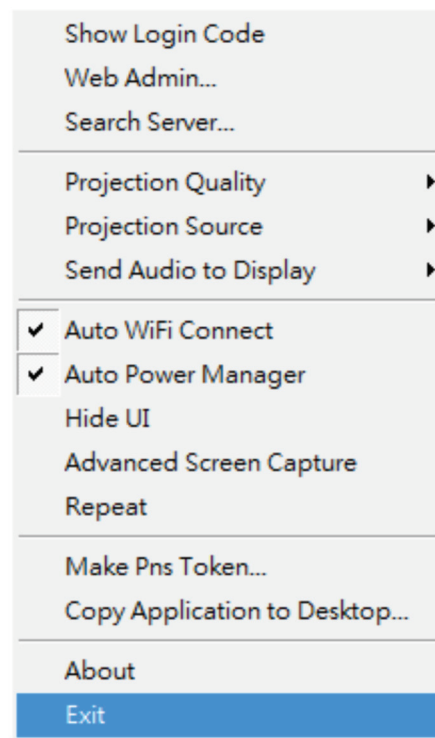


Figure 3-33. Exit.

Chapter 4: Mac Client Utility

4. Mac Client Utility

4.1 Launch Application

1. Enable your Wi-Fi and connect to the Wireless Video Presentation System device (Figure 4-1).
2. Execute the Wireless Video Presentation System client software for Mac.



Figure 4-1. Software launching.

3. Launch the Wireless Video Presentation System software and enter the login code (Figure 4-2).



Figure 4-2. Login code.

4. Start Projection (Figure 4-3).



Figure 4-3. Start projection.

4.2 Main User Interface

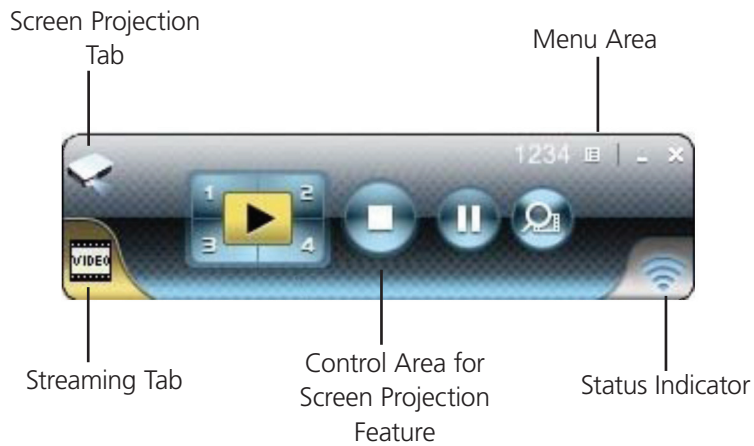


Figure 4-4. Front panel view, screen projection.

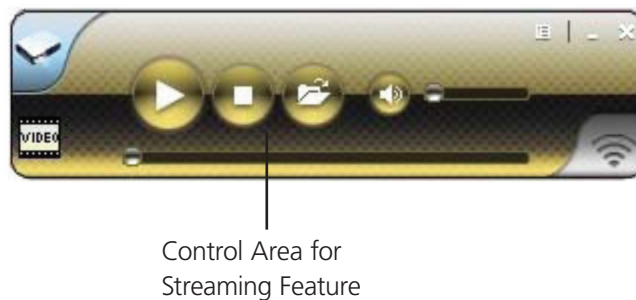


Figure 4-5. Front panel view, control area.

4.3 Screen Projection

Click the “Play” button for full or split screen to project the main screen on to the display immediately. Click the “Pause” button to freeze the projection screen. Click the “Stop” button to stop projecting your screen.









NOTE: You can select the split screens by clicking around the “Play” button or arrow button where the 1, 2, 3, and 4 buttons are (see Figure 4-6). The buttons are only different colors.

NOTE: These buttons are located under the Video Mode panel.



Figure 4-6. Buttons on the unit.

Table 4-1. Buttons and descriptions.

Button	Description
	Full screen projection
	Project to Split #1
	Project to Split #2
	Project to Split #3
	Project to Split #4
	Stop projecting
	Pause projecting
	Refresh screen

4.4 Video/Music Streaming Feature

Click the “Video Tab” to switch to Video Mode, choose a video/audio file, then it will stream the original file to play back on the screen.

NOTE: The video tab is located on the bottom left of the software, and looks like a video strip.

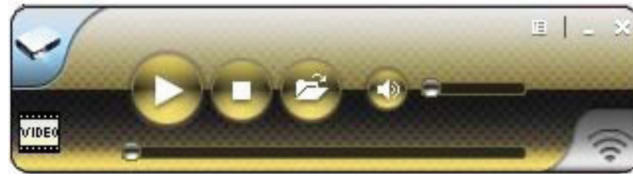


Figure 4-7. Front panel.

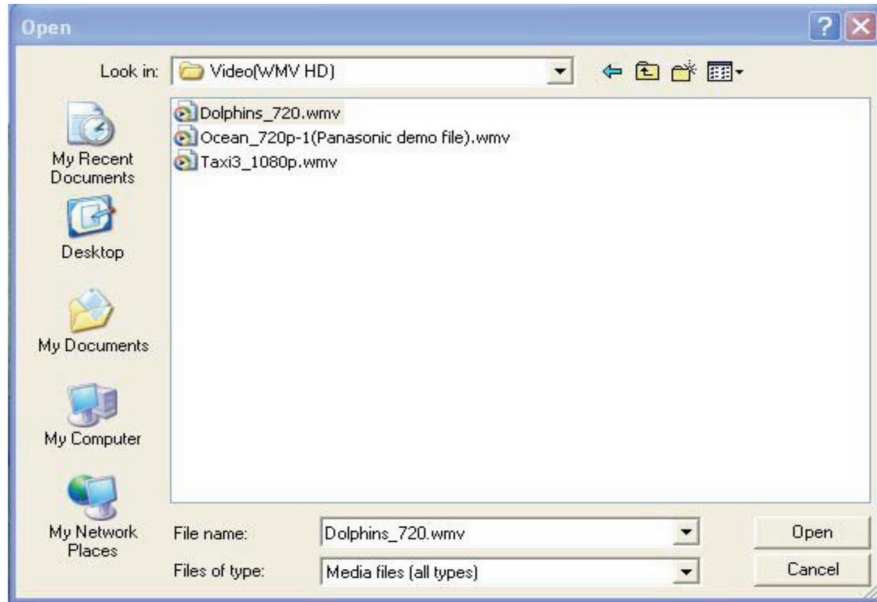








Figure 4-8. Open screen.

NOTE: Supported video formats: MPG, MPEG, DAT, VOB, WMV9, ASF, MP3, WAV, H.264.

Table 4-2. Buttons and descriptions.

Button	Description
	Start playing video/music
	Stop playing video/music
	Open video/music file
	Mute
	Volume Level
	Progress bar

5. Web Management

5.1 Home Page

1. Make sure your PC connects to the Wireless Video Presentation System box successfully.
2. Open your browser, and it will enter the Wireless Video Presentation System home page (Figure 5-1) automatically.
3. If not, enter your IP address on the browser, and you will see the IP on the projector screen.
4. The default IP is 192.168.100.10.

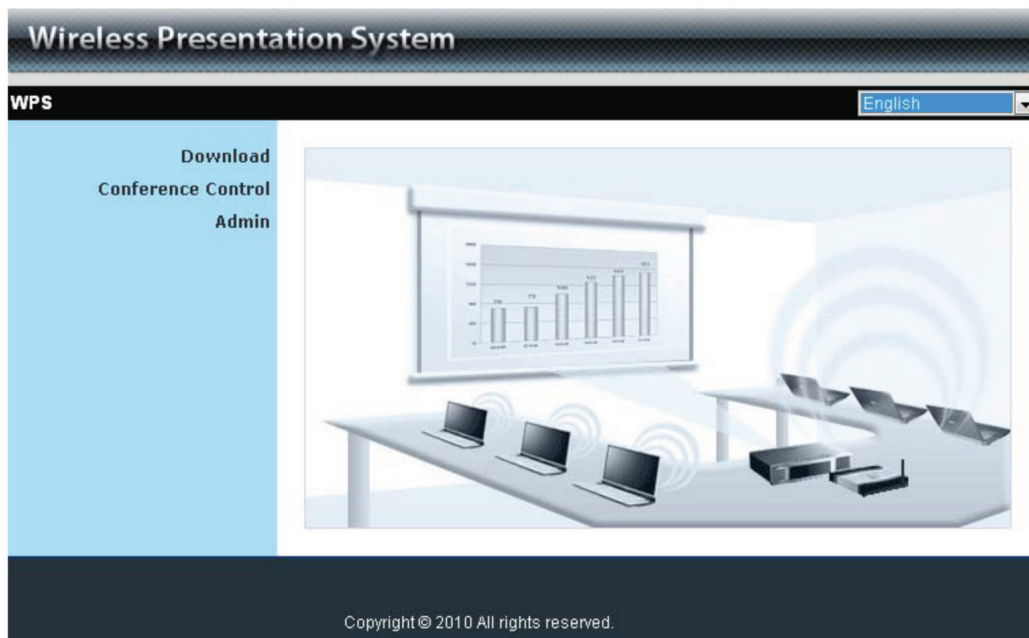


Figure 5-1. Home page.

5.2 Download Software

1. Select “Download software” function.
2. Select the “Win 7/Windows Vista/XP/2000” or “Mac Utility” and execute the installation program.
3. Follow Installation Wizard instructions to proceed until the installation process is complete.
4. If you see a “Windows Security Alert” popup, then Windows firewall has blocked this program. Press the “Unblock” button to continue installation.
5. Once installation is complete, a utility shortcut appears on the screen (Figure 5-2).

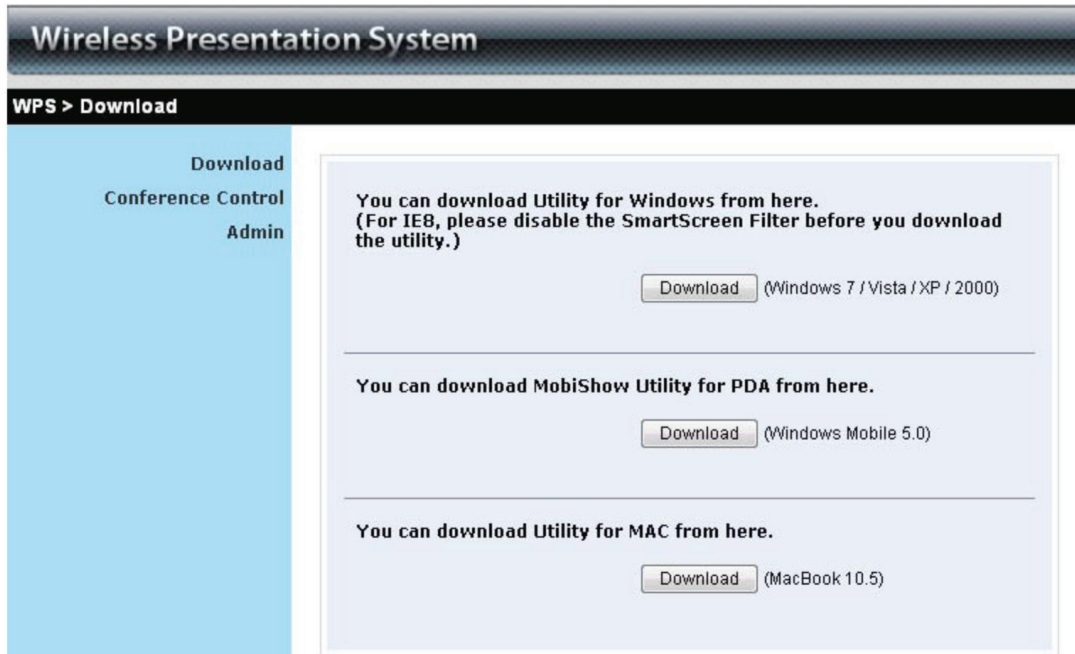


Figure 5-2. Main page.









Figure 5-3. Run or Save dialog box and WPS shortcut icon.

5.3 Conference Control

1. This function allows you to host a meeting smoothly without swapping projector cables. Participants can show their presentations easily.
2. Select the "Conference Control" function.
3. Enter the password (the default value is "trainer"), and then press [Login] (Figure 5-4).



Figure 5-4. Conference control login screen.

4. After login, you can see a User List on the screen which indicates all the users connected to the Wireless Video Presentation System unit.
5. There are three columns, "Computer Name," "Play Control," and "IP Address."
6. Play Control: There are six buttons, including Play(Full) , Play Split #1 , Play Split #2 , Play Split #3 , Play Split #4 , and Stop . (See Figure 5-5.)

Computer Name	Play Control	IP Address
eunicewu	1 2 3 4	192.168.100.12
sandrahsieh	1 2 3 4	192.168.100.13
simon_huang	1 2 3 4	192.168.100.14
howardling	1 2 3 4	192.168.100.15
Jenniferlu	2 3 4	192.168.100.16
ashleychuang	1 3 4	192.168.100.17
firmanwu	1 2 4	192.168.100.18
ptchou	1 2 3	192.168.100.19

Figure 5-5. User list.

5.4 Login Web Admin



Figure 5-6. Web Admin login screen.

1. Click on “Admin” and then enter the password to login to the web page (Figure 5-6).
2. The default password is “admin.”

5.4.1 System Status

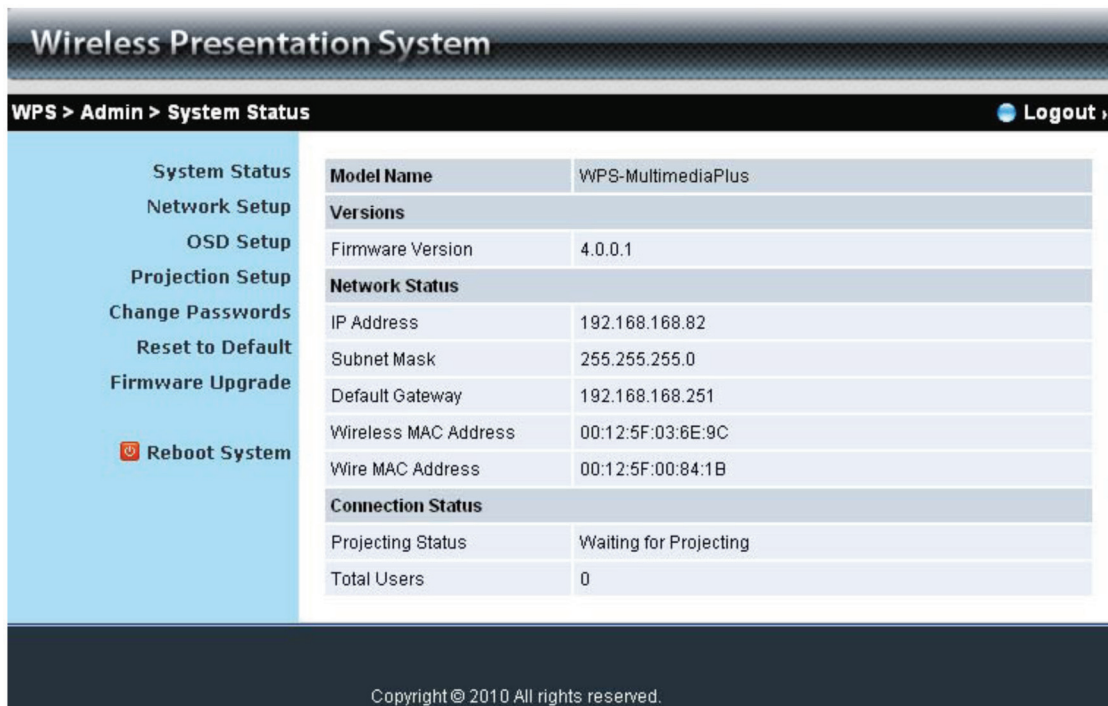


Figure 5-7. System Status screen.

Click on “System Status” to show the current system status (Figure 5-7). See Table 5-1 for a list of options.

Table 5-1. System status screen options.

Option	Description
Model name	product model name
Versions	
Firmware version	4.0.0.1
Network Status	
IP address	IP address of WPS device
Subnet mask	subnet mask
Default gateway	default gateway
Wireless MAC address	wireless MAC address
Wired MAC address	wired MAC address
Connection Status	
Projecting status	displays “Waiting for projecting” or “Projecting”
Total users	shows how many users are logged into the WPS

5.4.2 Network Setup

There are several configuration options as shown below.

Section	Option	Value
IP Setup	Obtain an IP address automatically	<input type="radio"/>
	Use the following IP address	<input checked="" type="radio"/>
	IP Address	10 . 8 . 60 . 31
	Subnet Mask	255 . 255 . 0 . 0
DHCP Server Setup	Auto	<input type="radio"/>
	Disable	<input checked="" type="radio"/>
	Start IP	192 . 168 . 100 . 11
	End IP	192 . 168 . 100 . 254
	Subnet Mask	255 . 255 . 255 . 0
Wireless Setup	Wireless LAN	<input checked="" type="radio"/> Enable
	Embedded AP SSID	WPS Marketing Conference Room
	Region	WORLDWIDE
	SSID Broadcast	<input type="radio"/> Enable <input checked="" type="radio"/> Disable
	Channel	Auto
	Encryption	Disable
	Key	
Ap Client	Connect to Existing AP	<input type="radio"/> Enable <input checked="" type="radio"/> Disable
	Existing AP SSID	
	Encryption	Disable
	Key	
GateKeeper	All Pass	<input checked="" type="radio"/>
	All Block	<input type="radio"/>
	Internet Only	<input type="radio"/>

Figure 5-8. Network Setup screen.

The default setting of the Wireless Video Presentation System box is DHCP client. When the Wireless Video Presentation System box is connected to a LAN that already has a DHCP server present, the Wireless Video Presentation System box takes an IP address assigned to it by the server. When the Wireless Video Presentation System box is connected to a LAN that does not have a DHCP server, the Wireless Video Presentation System box becomes the DHCP server in the network.

IP Setup:

- Select “obtain IP address automatically” or “Use the following IP address.”
- IP Address: The default value is 192.168.100.10.

- Subnet Mask: The default value is 255.255.255.0
- Default Gateway: The default value is 192.168.100.10
- DNS Server: The default value is 192.168.100.10

DHCP Server Setup:

- You can select “auto Enable/Disable DHCP Server” or “Disable.”
- Start IP: The start IP address of DHCP Server.
- End IP: The end IP address of DHCP Server
- Subnet Mask: The default value is 255.255.255.0
- Default Gateway: The default value is 192.168.100.10
- DNS Server: The default value is 192.168.100.10

Wireless Setup:

- Wireless LAN: The default value is “Enable.”
- Connect to Existing AP: Input the SSID of the Wi-Fi AP you want to connect to.
- Region: The default value is “Worldwide.”
- SSID: SSID string, max. length is 32 bytes.
- SSID Broadcast: The default value is “Enable.”
- Channel: Use to set fixed channel or Auto. The “Auto” means after powering on the Wireless Video Presentation System, it will scan all wireless channels and select one channel automatically.
- Encryption: Select “Disable” or one of WEP/WPA/WPA2 64 bit or 128 bit in ASCII or HEX string.
- Key: If Encryption is enabled, you have to set the key value according to the encryption mode you selected.

Gatekeeper:

Gatekeeper is designed for ensuring the enterprise network security within the Wireless Video Presentation System box.

- All Pass: Allows Guest Users to access all office networks and Internet.
- All Block: Blocks Guest Users to access all office networks (LAN).
- Internet Only: Blocks Guest Users from office networks (LAN) but still reserves Internet connection capability, if available.

Apply: Press button to select this mode.

Cancel: Press button to abort action.

5.4.3 OSD Setup

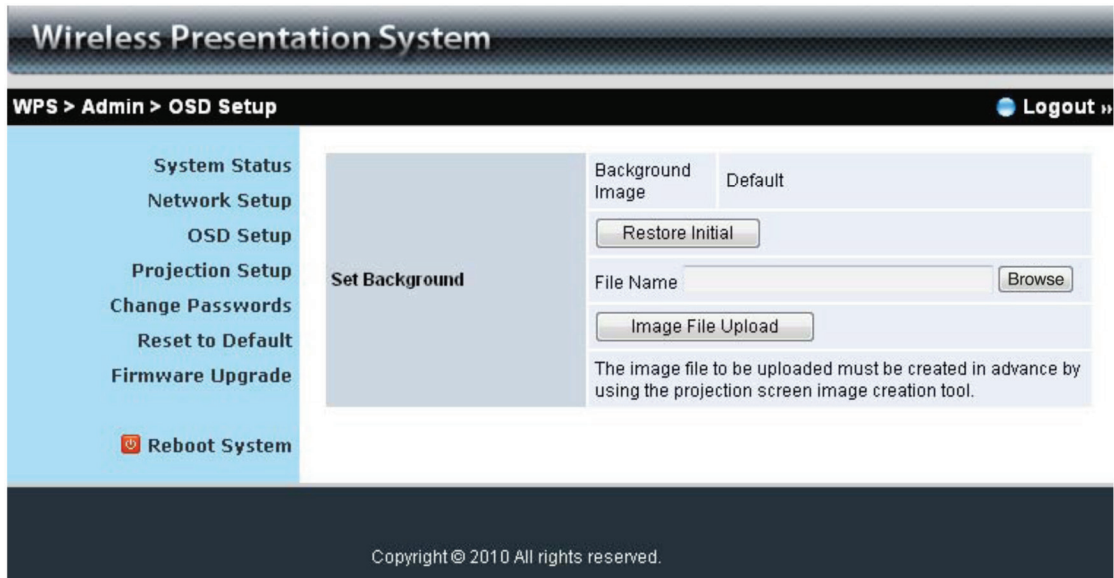


Figure 5-9. OSD Setup screen.

Click on the "OSD Setup" button to change the OSD wallpaper (Figure 5-9).

- **Restore Initial:** Restore to default OSD wallpaper.
- **Image File Upload:** Upload the customized OSD wallpaper. (You need to convert the image to system defined format first using provided IB Maker utility which is stored on the USB token.)

5.4.4 Projection Setup

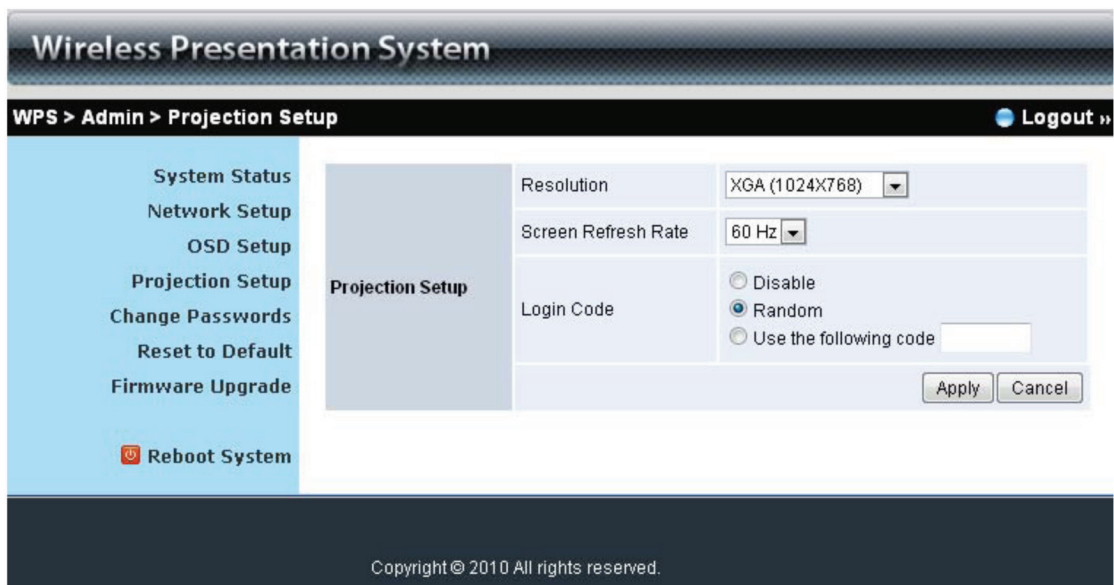


Figure 5-10. Projection Setup screen.

Click on the "Projection Setup" link (Figure 5-10).

- **Resolution:** XGA (1024 x 768), WXGA(1280 x 768, 1280 x 800) and SVGA(800 x 600). The default value is XGA.
- **Screen Refresh Rate:** This is the VGA output refresh rate, It provides 60 Hz and 75 Hz rates for different kinds of projectors.
- **Login Code:** Select "Disable," "Random," or "Use the following code" to set a specified 4-character Number.
- **Apply:** Confirm and Save modifications
- **Cancel:** Cancel all the modifications

5.4.5 Change Passwords



Figure 5-11. Change passwords screen.

Click on the "Change Password" button, to change the password value. The length of the password is up to 8 characters (Figure 6-11).

- **Enter New Password:** enter new password you want to change for each category.
- **Confirm New Password:** confirm new password.
- **Apply:** Confirmation and Save modifications.

5.4.6 Reset to Default

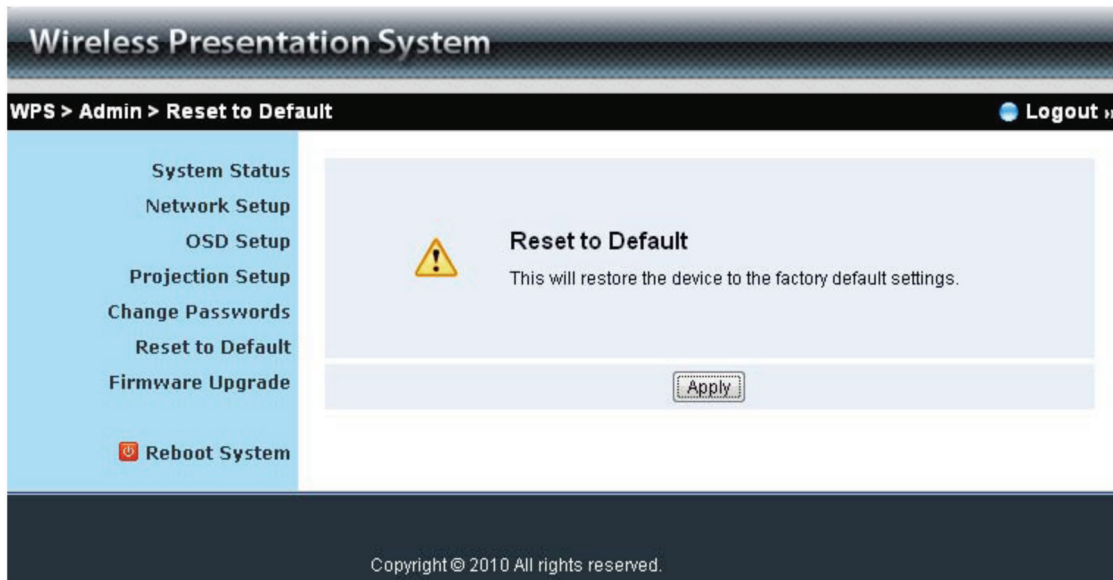


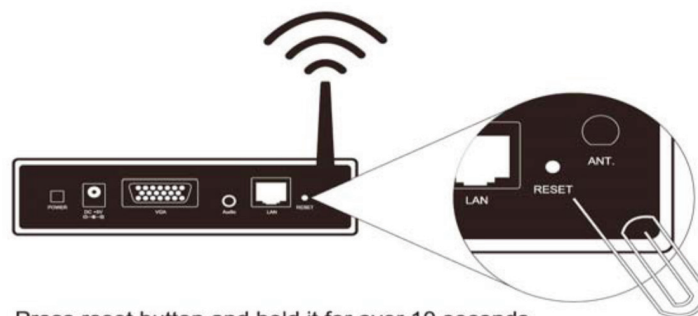
Figure 5-12. Reset to default screen.

Click on the "Reset to Default" button to restore factory default settings (Figure 5-12).

Apply: Confirm and continue.

*** another way to restore Factory Default Settings:

1. Press the "Reset" button and Hold.
2. Turn on the Wireless Video Presentation System box.
3. Wait for more than 10 seconds and release the "Reset" button.
4. The factory default settings will be restored.



Press reset button and hold it for over 10 seconds.

Figure 5-13. Press the "Reset" button and hold it for more than 10 seconds.

5.4.7 Firmware Upgrade

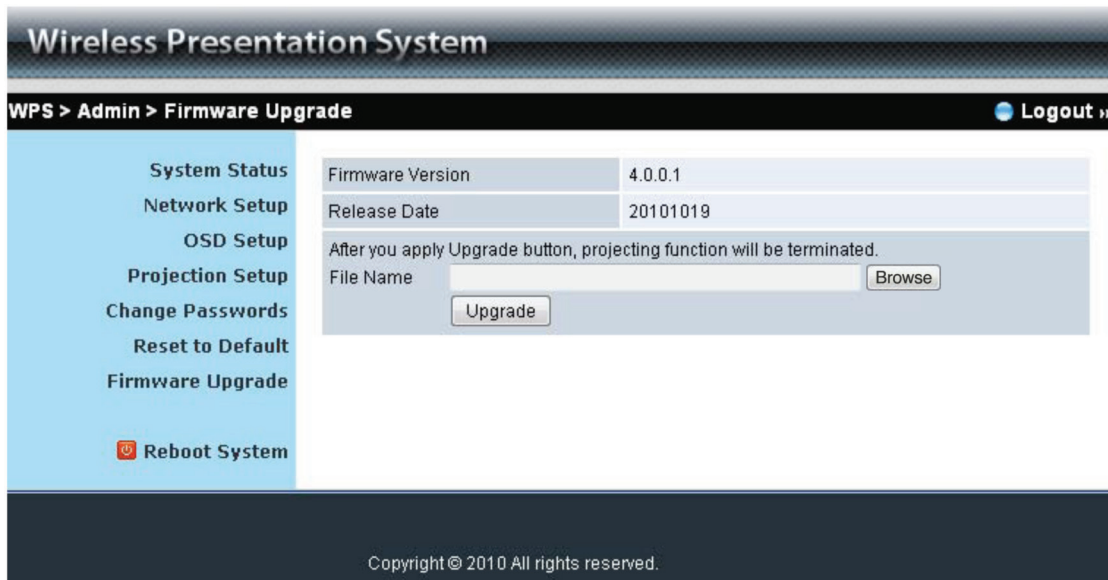


Figure 5-14. Firmware Upgrade screen.

Click on the “Firmware Upgrade” button to upgrade firmware (Figure 5-14).

1. First, get the latest firmware image file from the Black Box Web site (if available).
2. Click on the “Browse” button to specify the file name you want to upgrade.
3. Click on the “Upgrade” button to start.
4. A warning message is shown and a countdown counter will appear on the screen.
5. After a few minutes, a complete message will be shown on the screen.
6. Restart the Wireless Video Presentation System box for the changes to take effect (Figure 5-15).

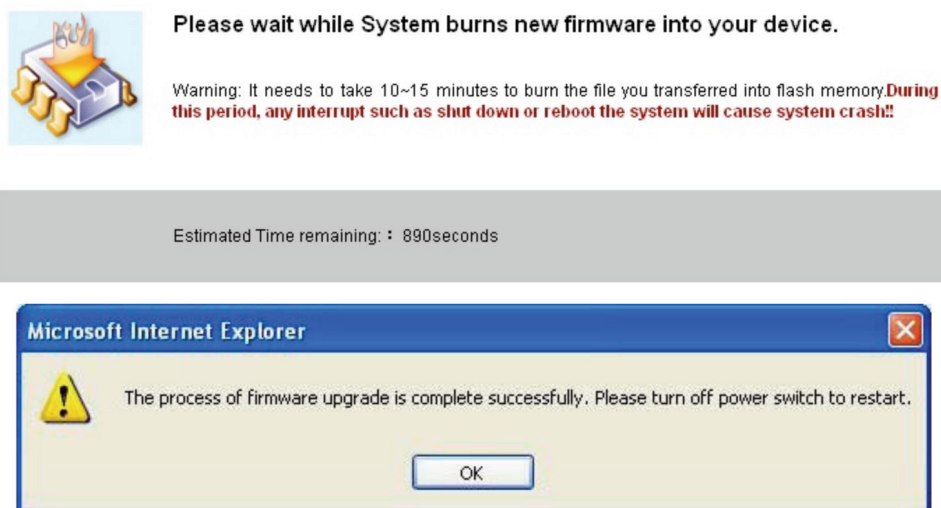


Figure 5-15. Firmware upload.

WARNING: Don't power off the Wireless Video Presentation System while firmware upgrade in progress. It might cause the box to malfunction.

5.4.8 Reboot System



Figure 5-16. Reboot system screen.

Click on the “Reboot System” button, to restart the system (Figure 5-16).

- **Reboot:** reboot the system automatically.

5.4.9 Logout

Wireless Presentation System

WPS > Admin > System Status [Logout »](#)

- System Status
- Network Setup
- OSD Setup
- Projection Setup
- Change Passwords
- Reset to Default
- Firmware Upgrade
- Reboot System

Model Name	WPS-MultimediaPlus
Versions	
Firmware Version	4.0.0.1
Network Status	
IP Address	192.168.168.82
Subnet Mask	255.255.255.0
Default Gateway	192.168.168.251
Wireless MAC Address	00:12:5F:03:6E:9C
Wire MAC Address	00:12:5F:00:84:1B
Connection Status	
Projecting Status	Waiting for Projecting
Total Users	0

Copyright © 2010 All rights reserved.

Figure 5-17. System Status screen.

6. Screen Image Background Maker

1. Run the "Screen Image Background Maker" and follow the wizard to convert the image file.

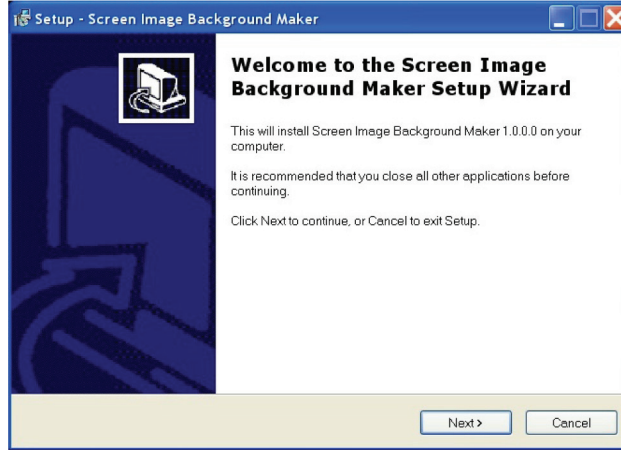


Figure 6-1. Welcome screen.

2. Press "Open" to select a file to convert.

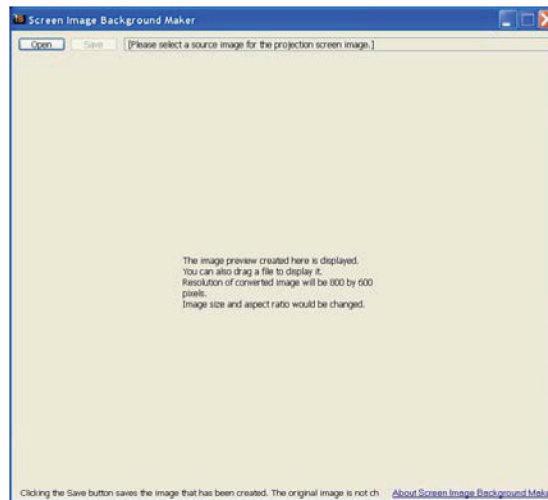


Figure 6-2. Select open.

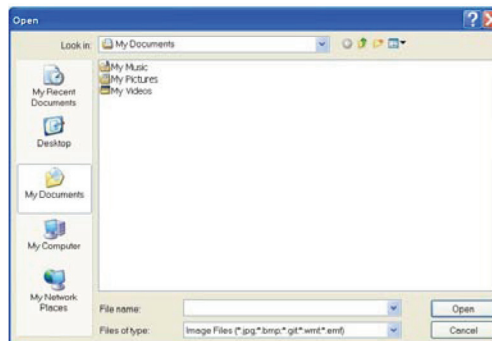


Figure 6-3. Select file to open.

3. Press "Save" to save this file.(*.ib)

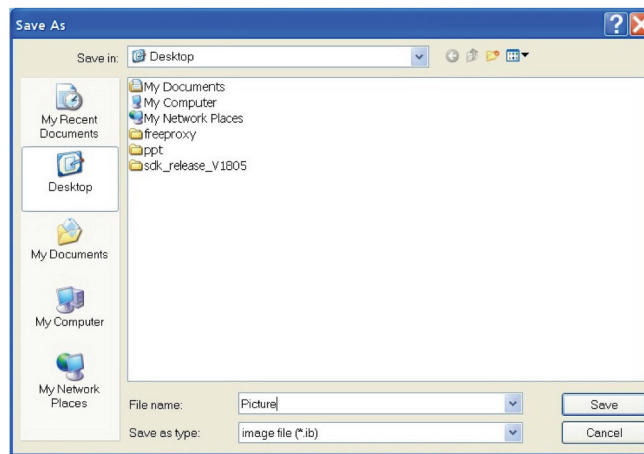


Figure 6-4. Save file.

4. Connect to the Wireless Video Presentation System Web page, and then select the "OSD setup" page.

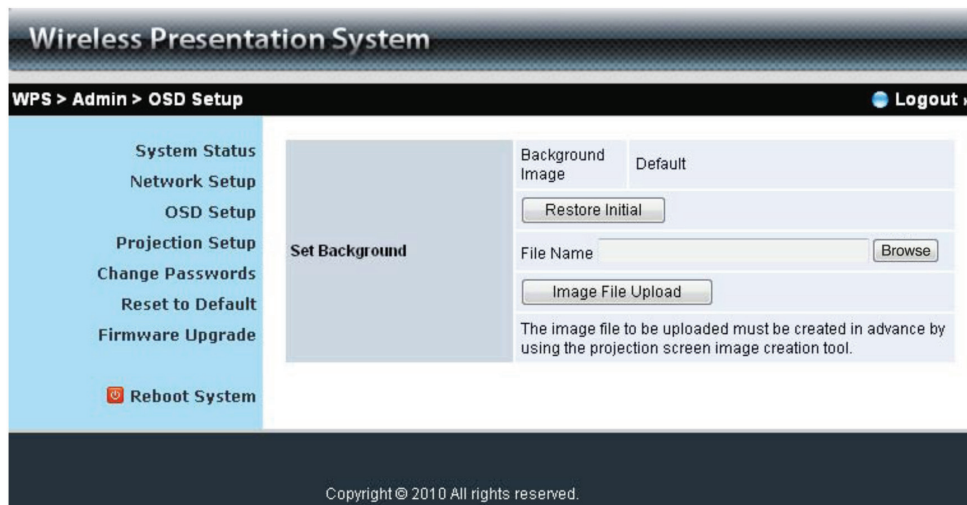


Figure 6-5. OSD Setup screen.

Chapter 6: Screen Image Background Maker

5. Press "Browse" to choose the *.ib file.

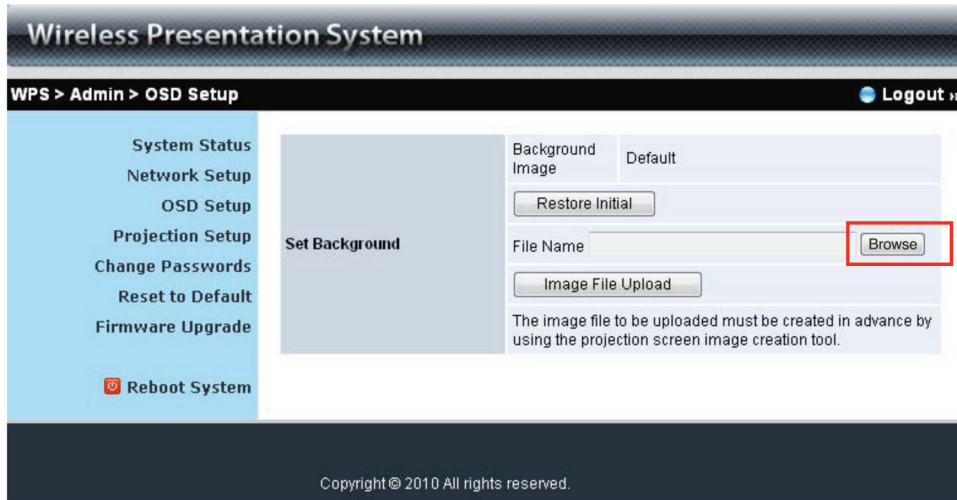


Figure 6-6. Browse backgrounds button.

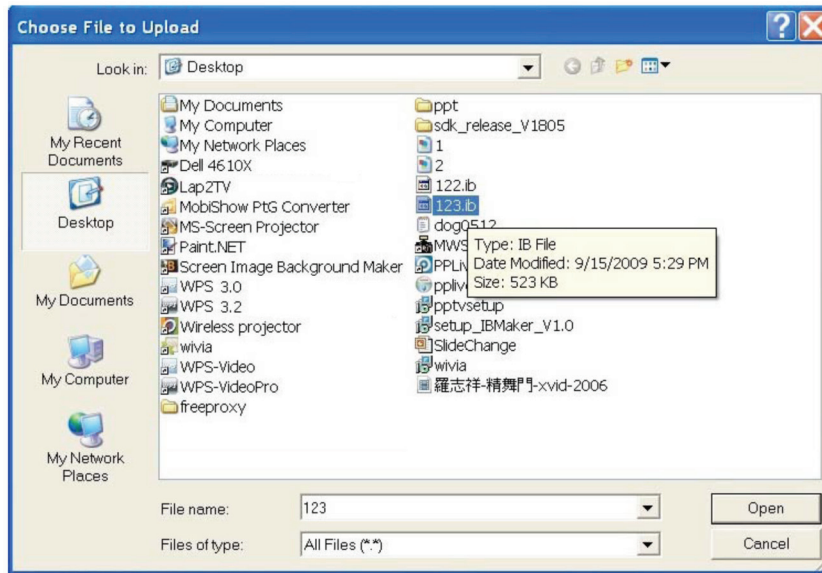


Figure 6-7. Available backgrounds.

6. Press "Image File Upload" to upload your background image. Then it will show the popup dialog box.

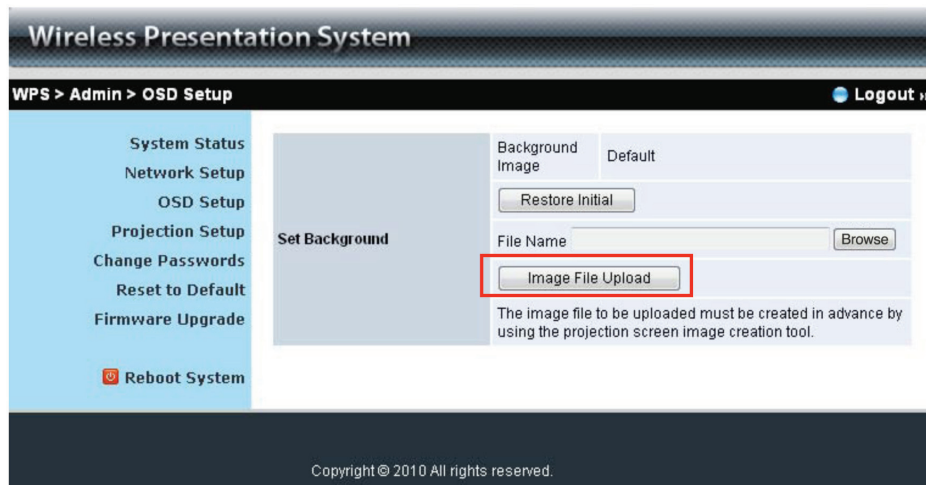


Figure 6-8. Image file upload.

NOTE: You may also find "Screen Image Background Maker" on the USB token.

Black Box Tech Support: FREE! Live. 24/7.

Tech support the
way it should be.



Great tech support is just 30 seconds away at 724-746-5500 or blackbox.com.



About Black Box

Black Box provides an extensive range of networking and infrastructure products. You'll find everything from cabinets and racks and power and surge protection products to media converters and Ethernet switches all supported by free, live 24/7 Tech support available in 30 seconds or less.

© Copyright 2013. Black Box Corporation. All rights reserved.

AC1132A, version 2

724-746-5500 | blackbox.com